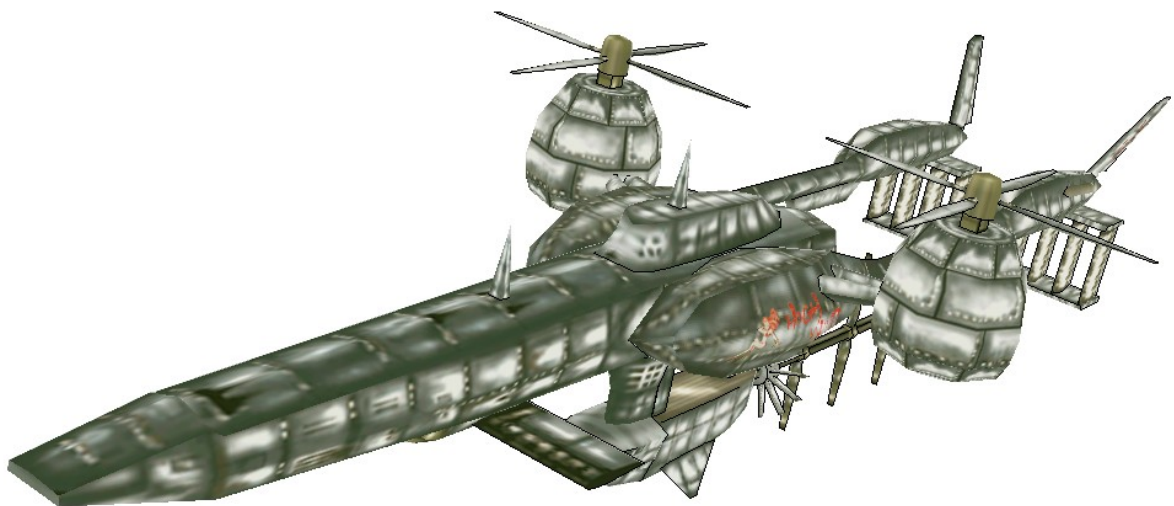


FINAL FANTASY VII



Papercraft created by Sascha Kunzke

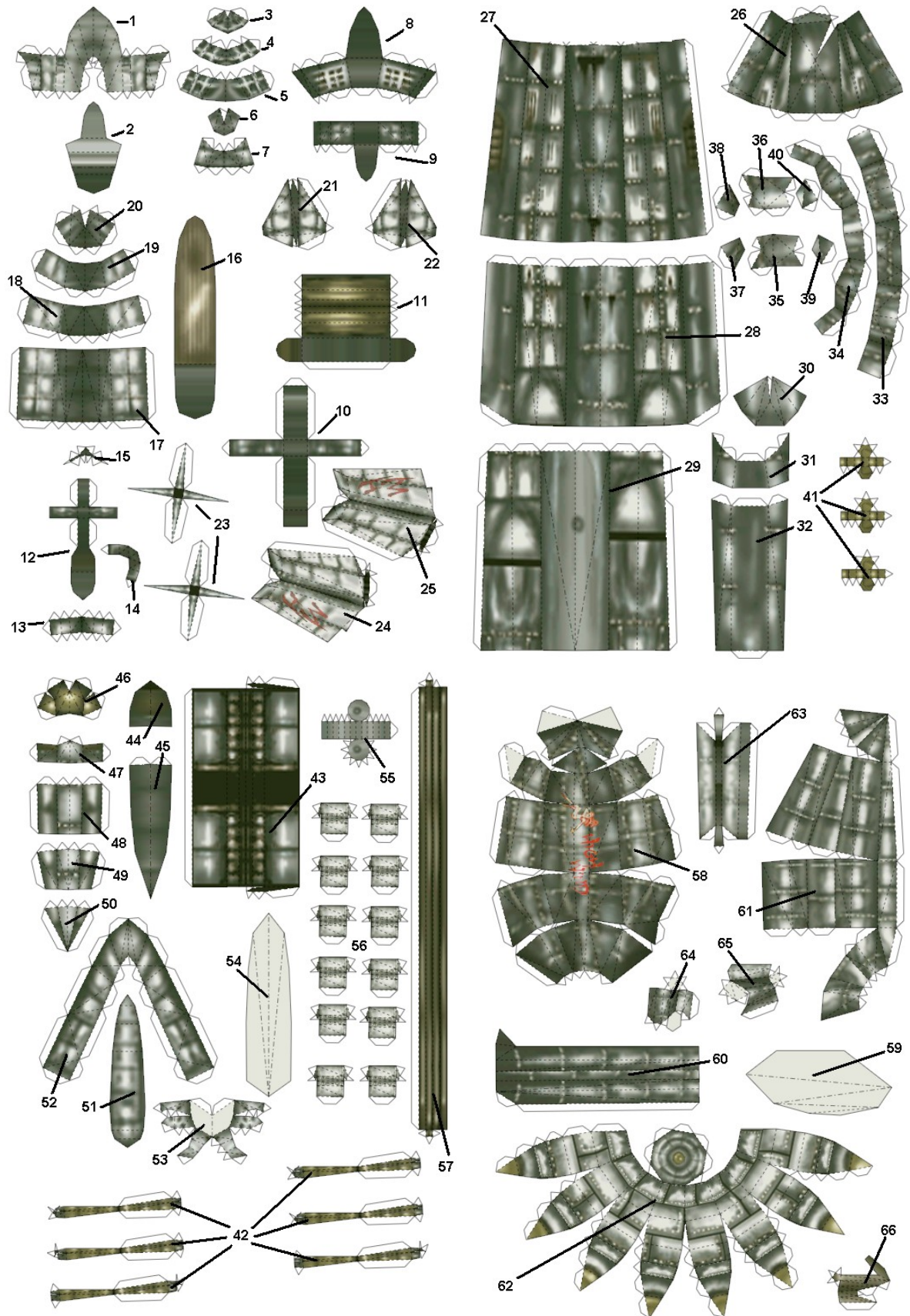


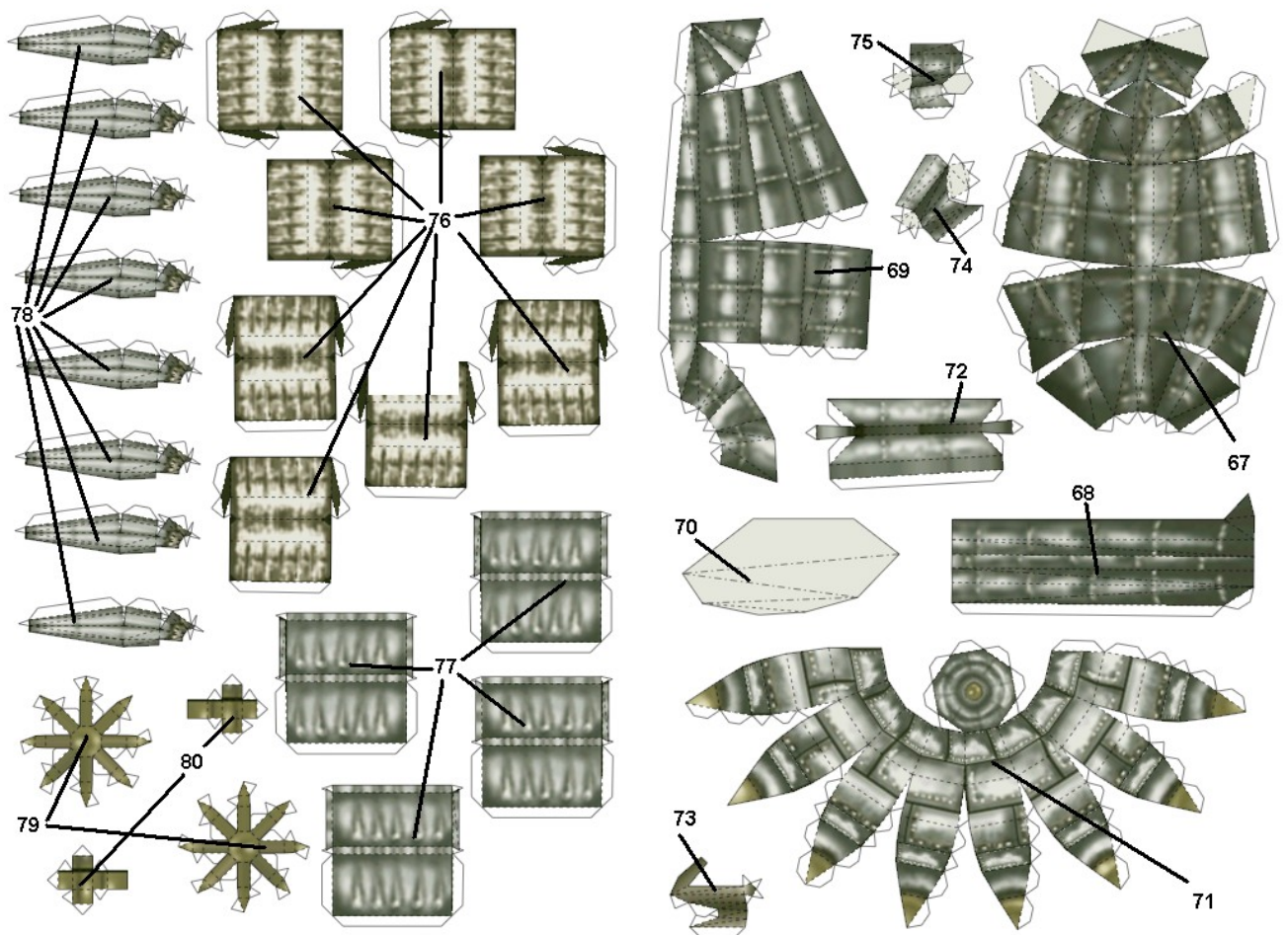
Ryuu_urashiman@hotmail.de

Final Fantasy VII (and the logo itself) is a Trademark of Square/SquareEnix©

This instruction consists only of pictures, how to build the Highwind and some advices.

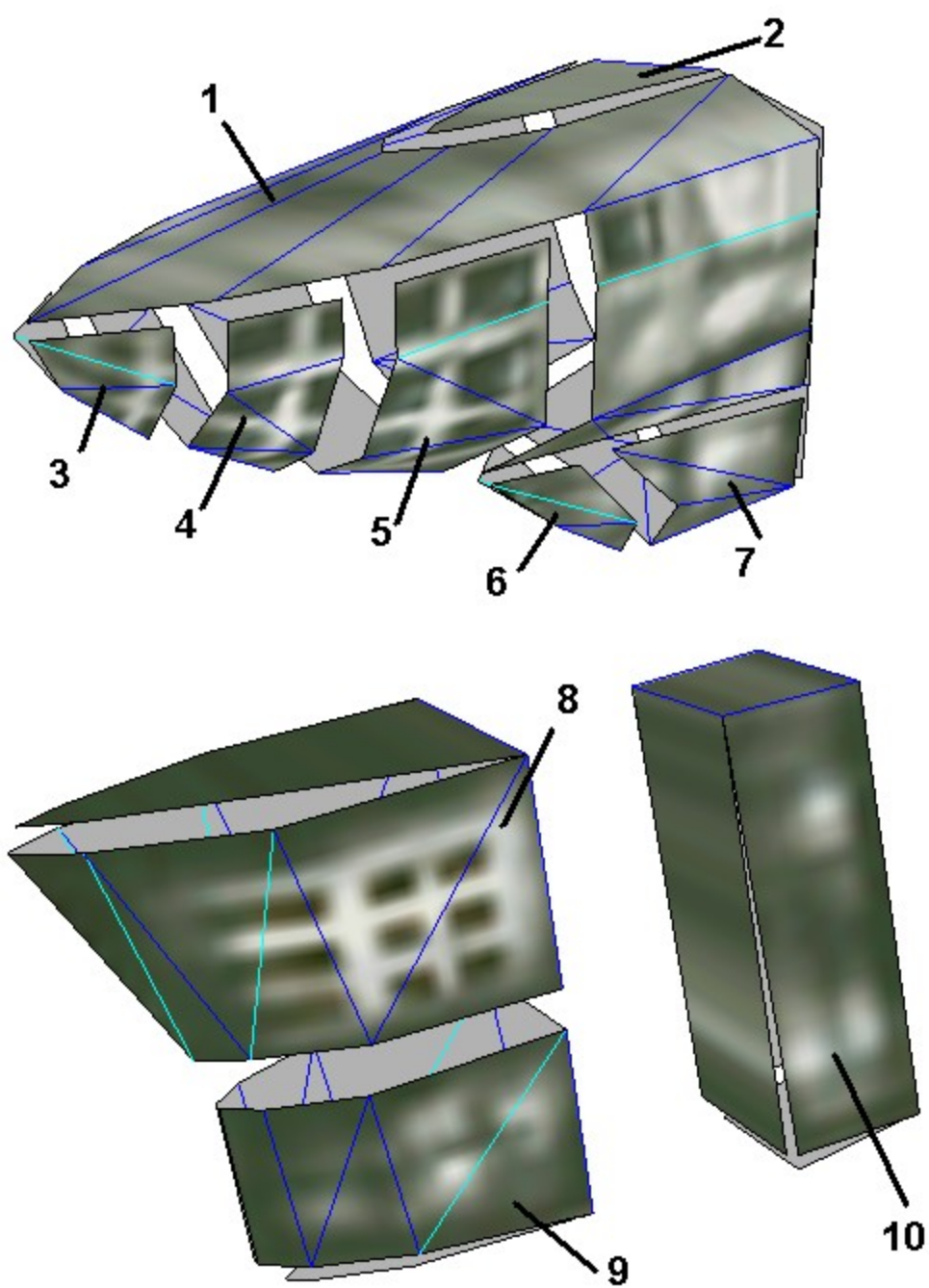
1. The Sheets

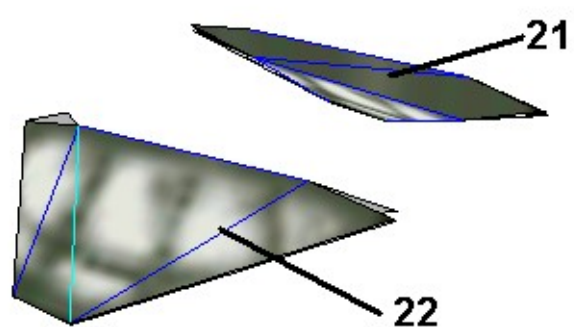
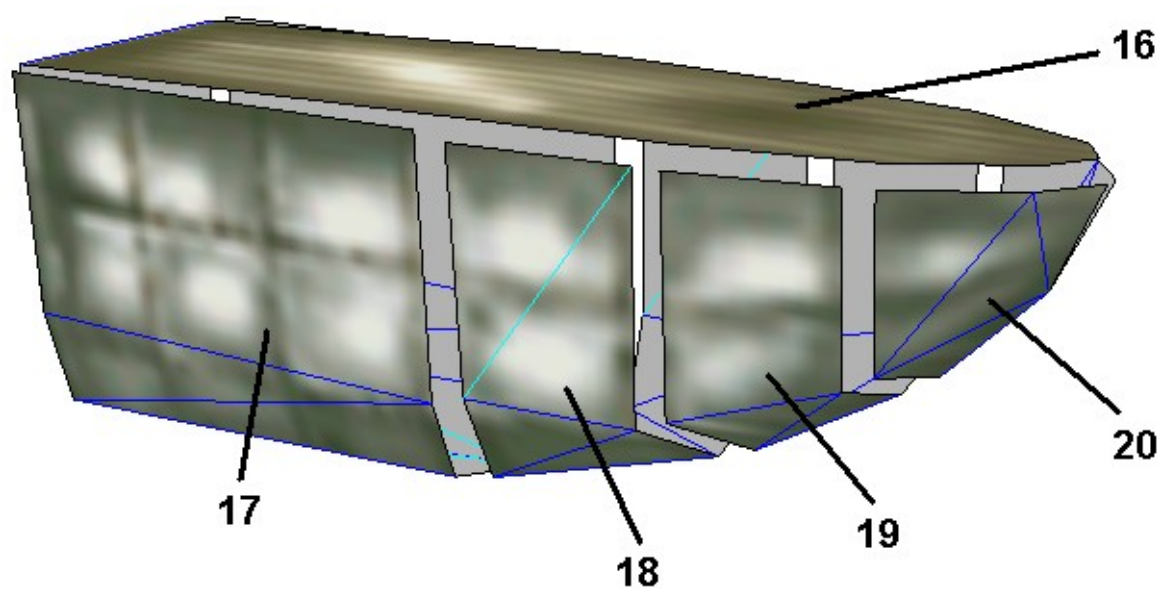
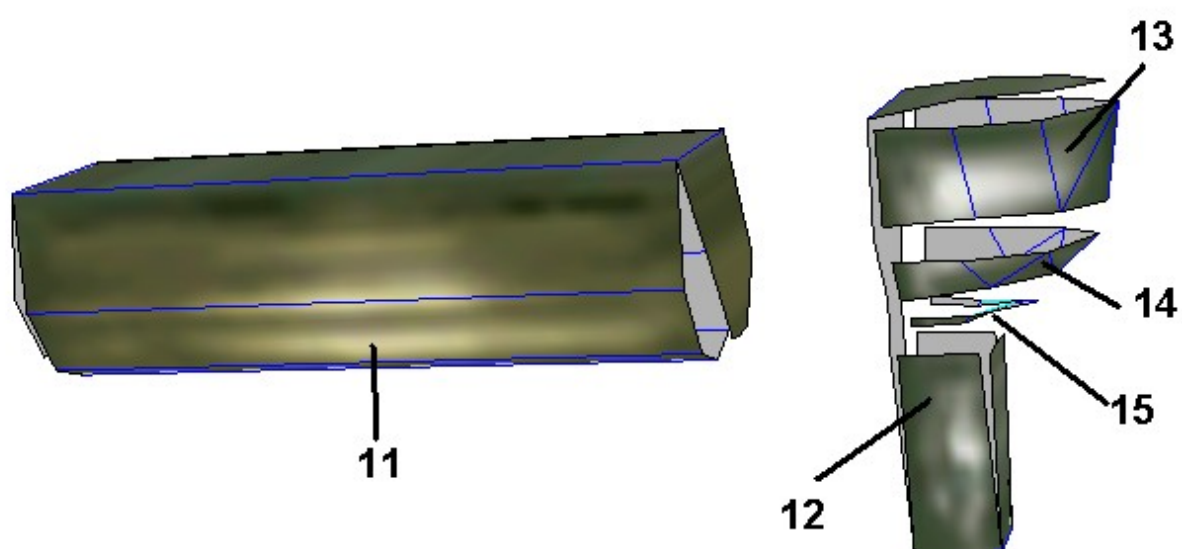


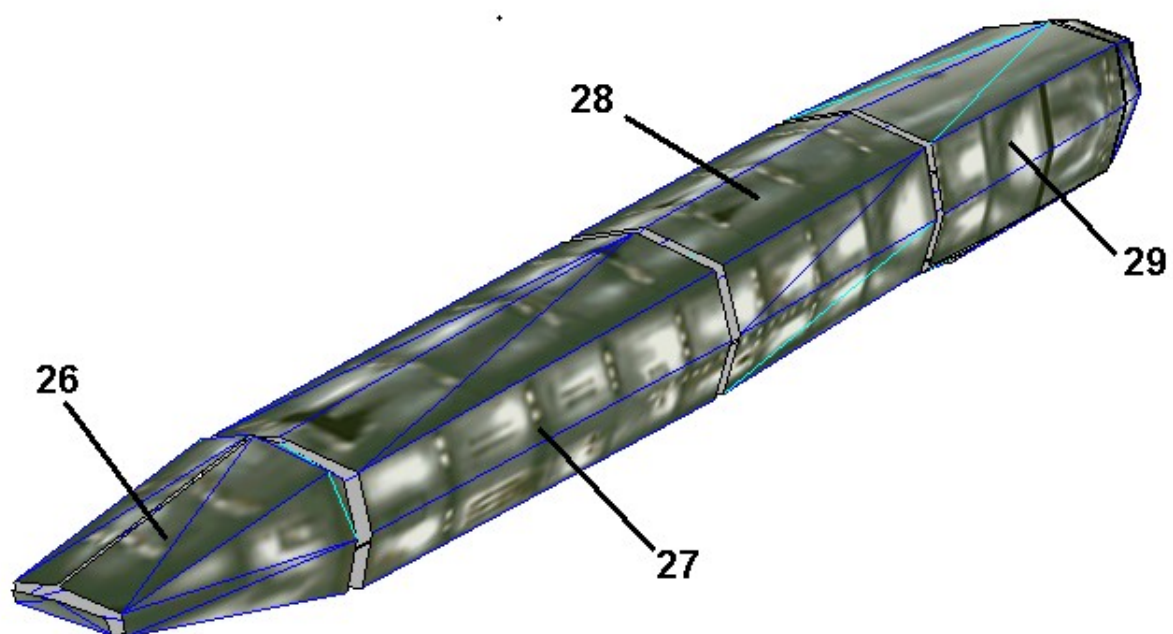
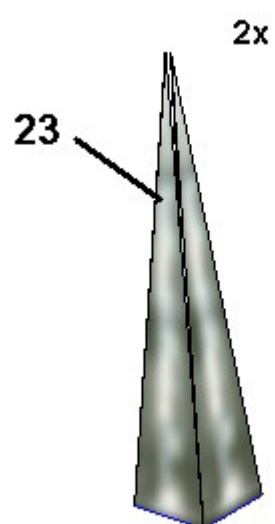


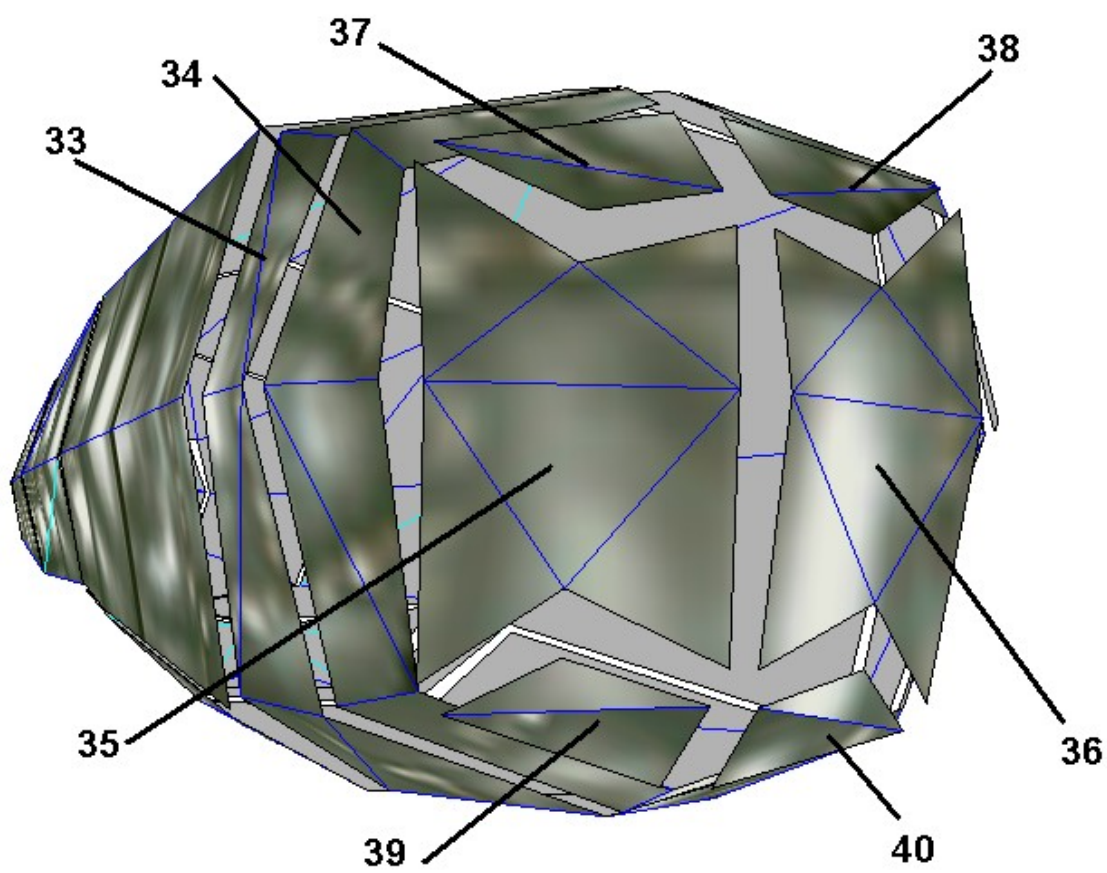
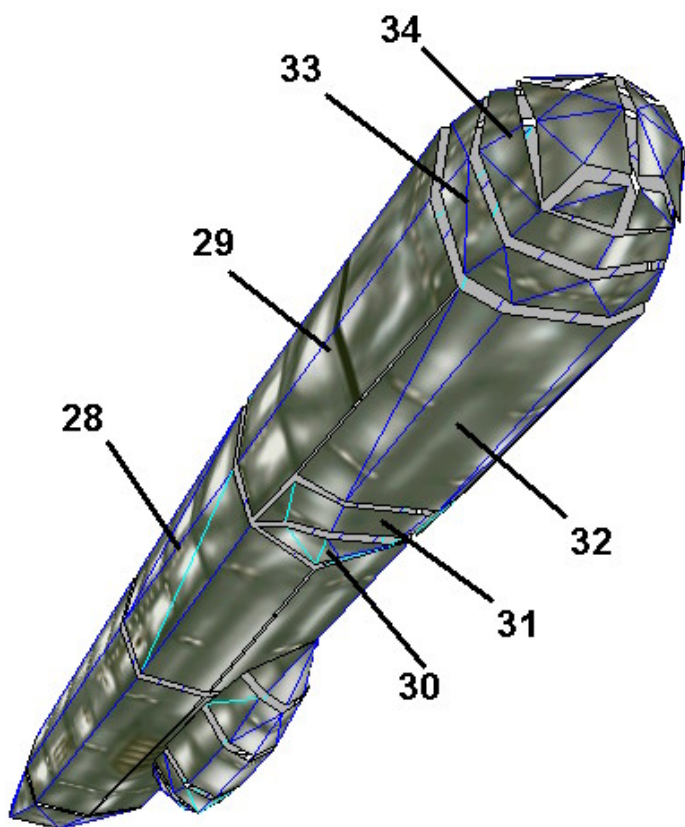
These are the sheets you have printed. The numbers will indicate the parts you need in the different steps.

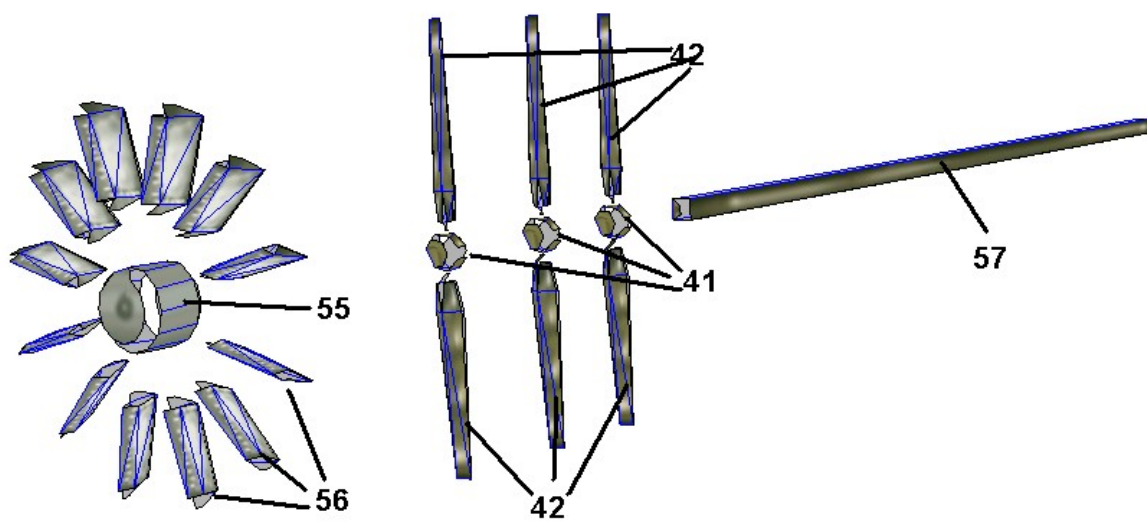
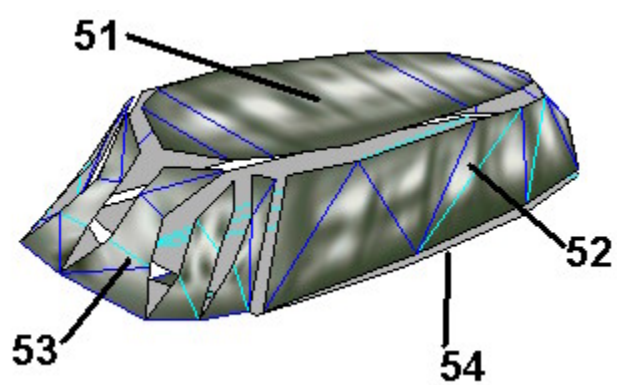
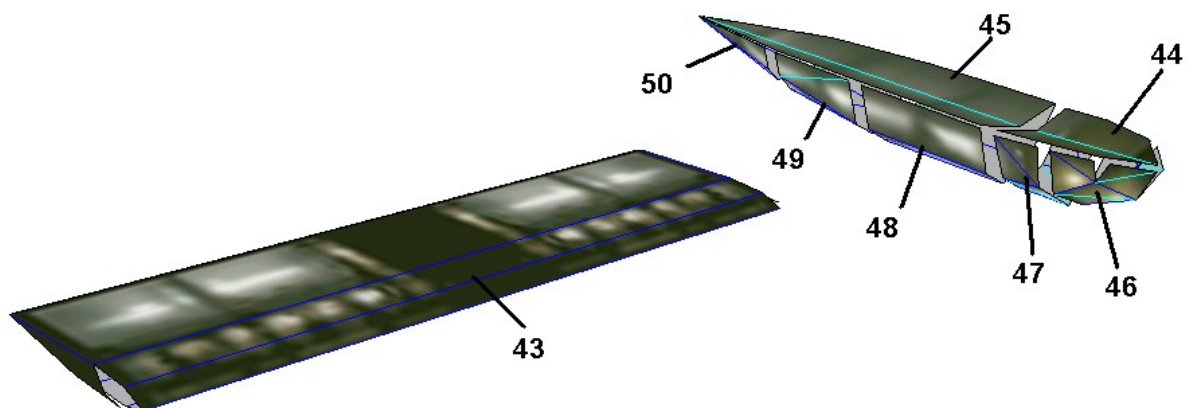
2. How to build it.

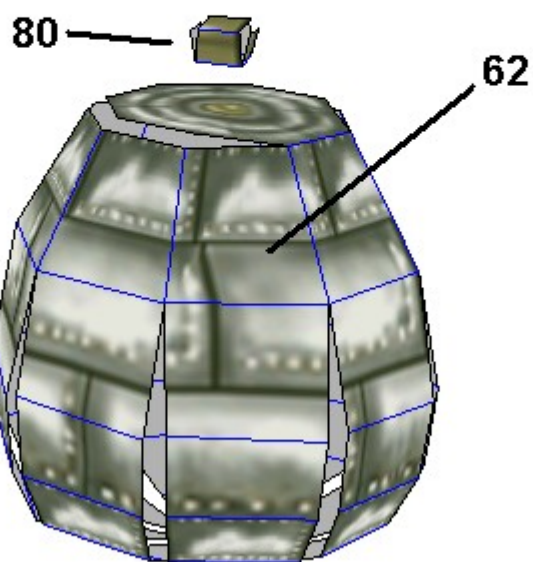
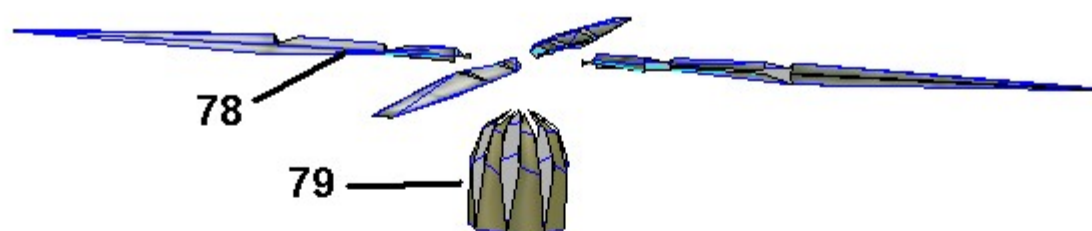
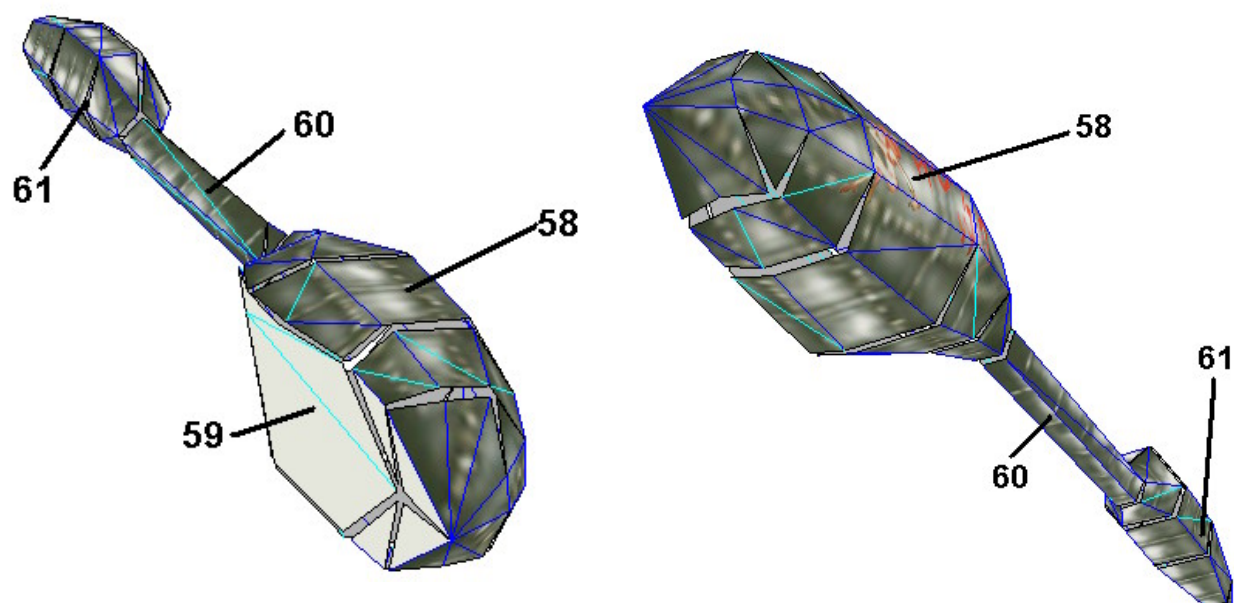


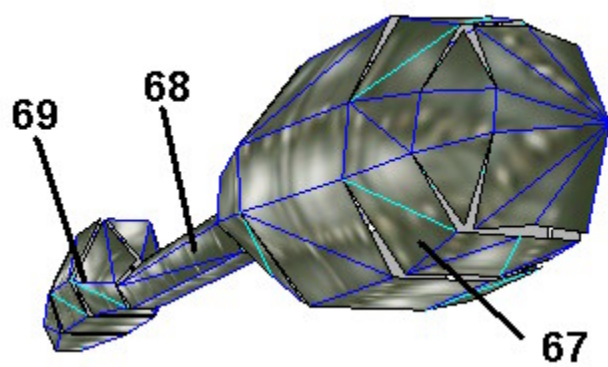
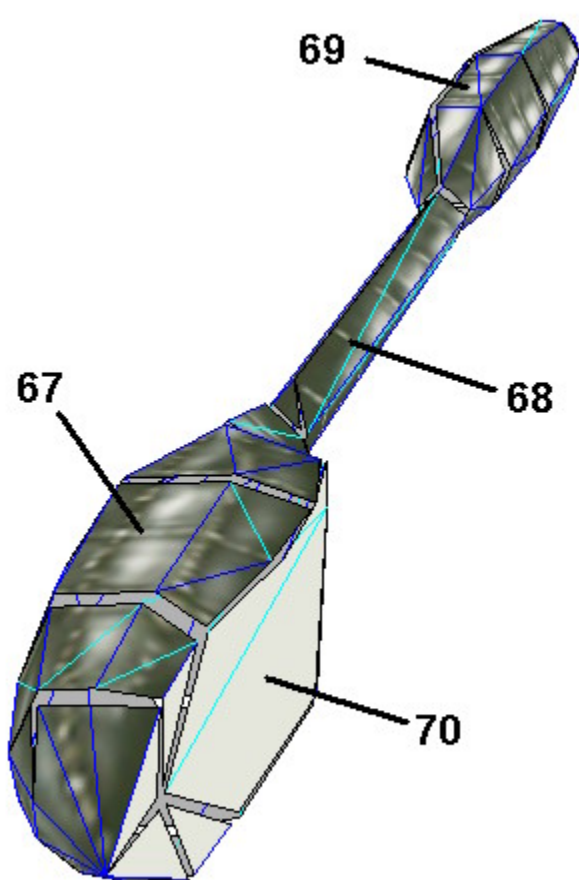
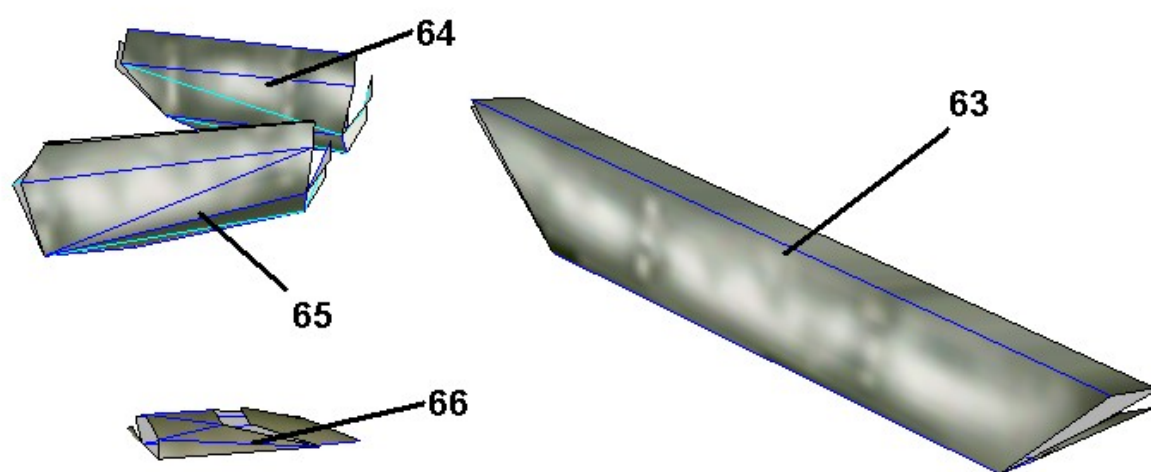


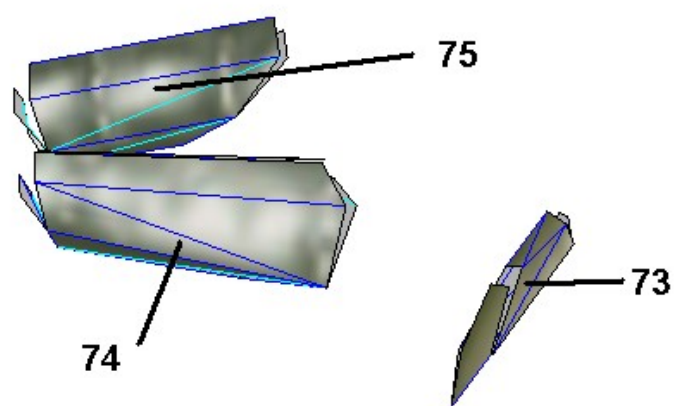
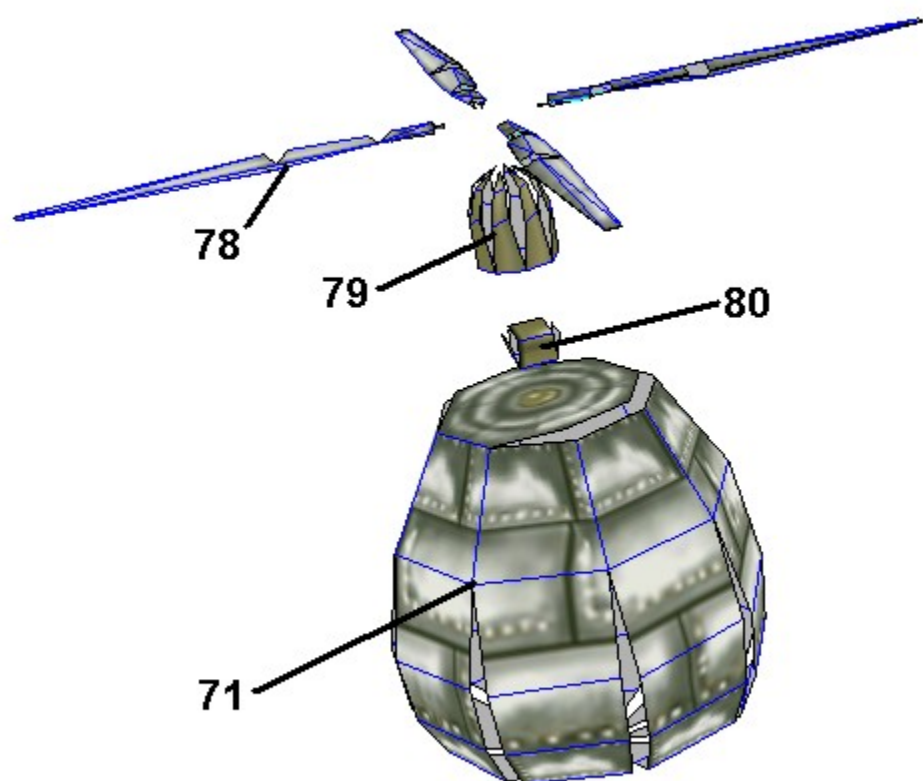


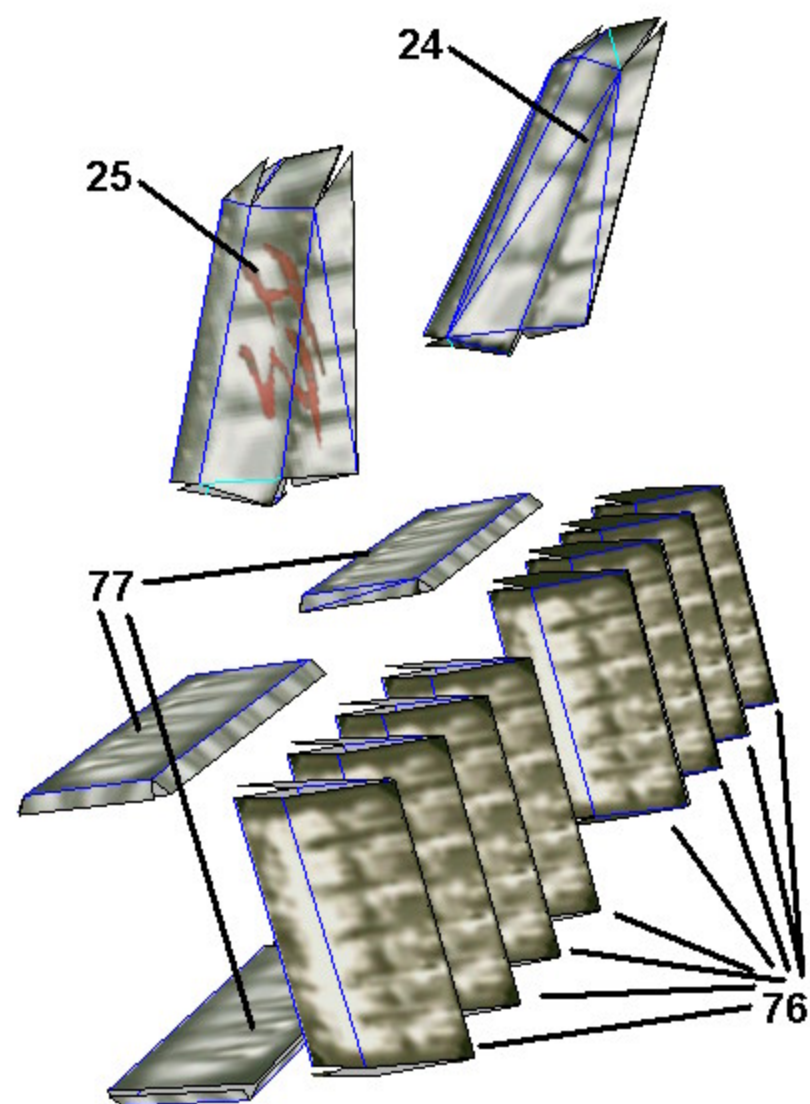




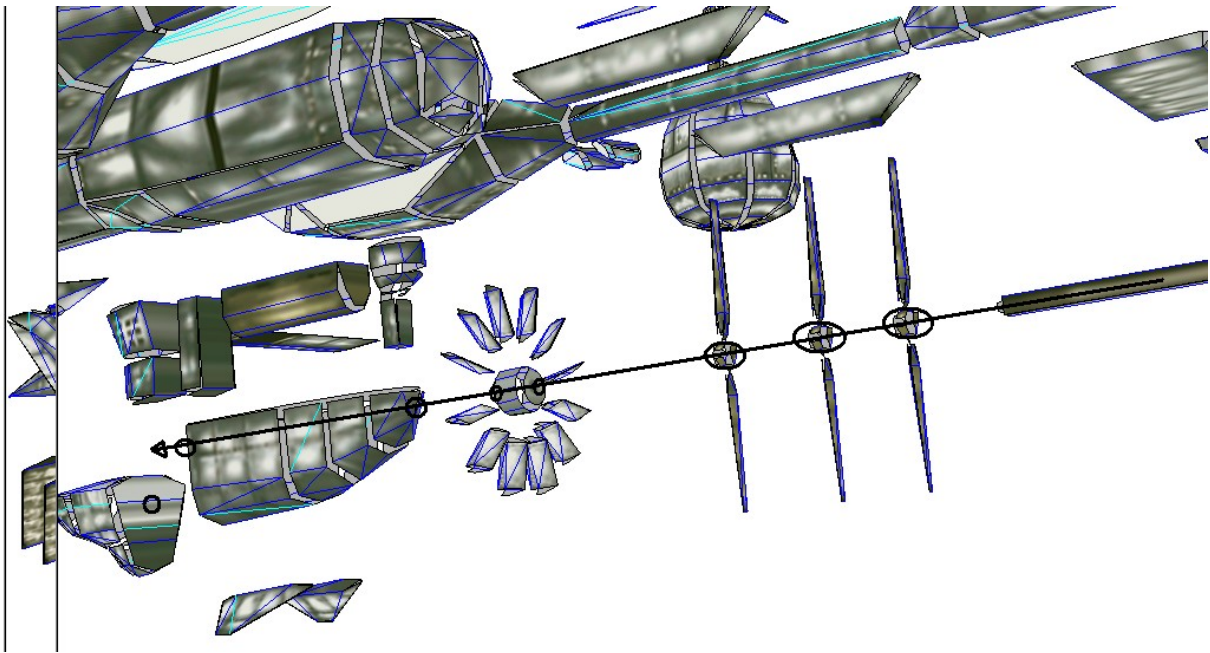




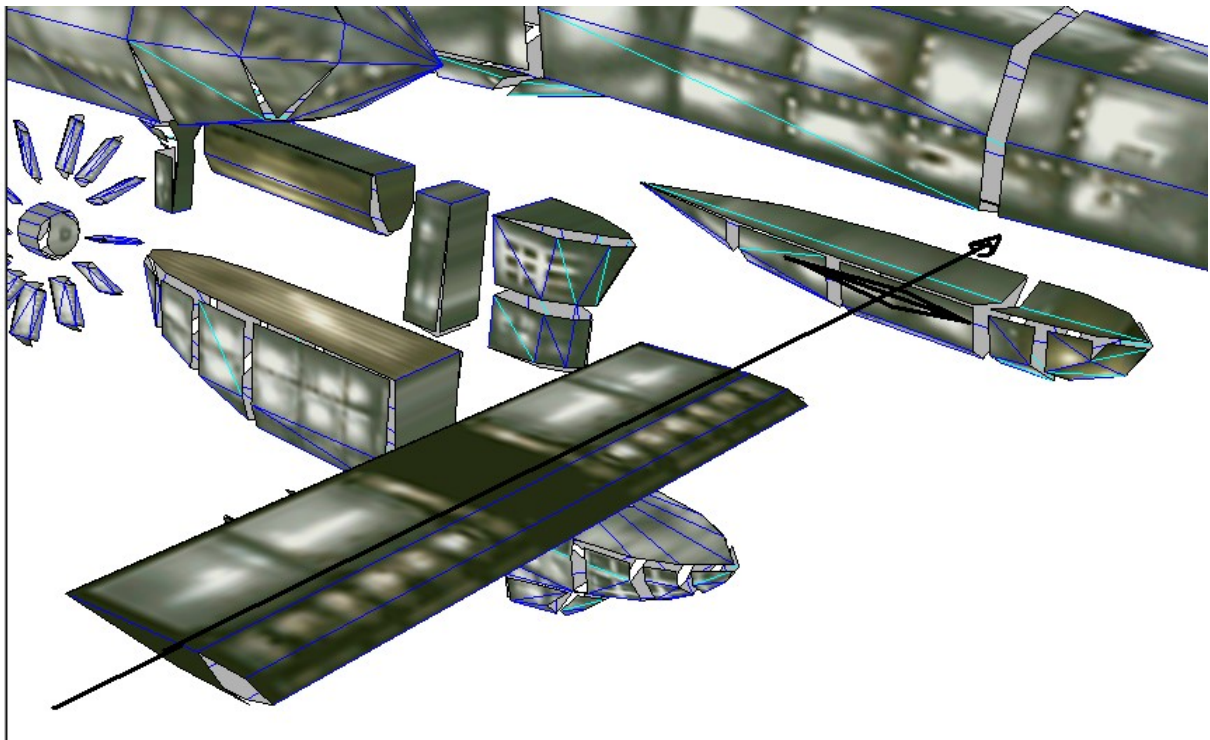




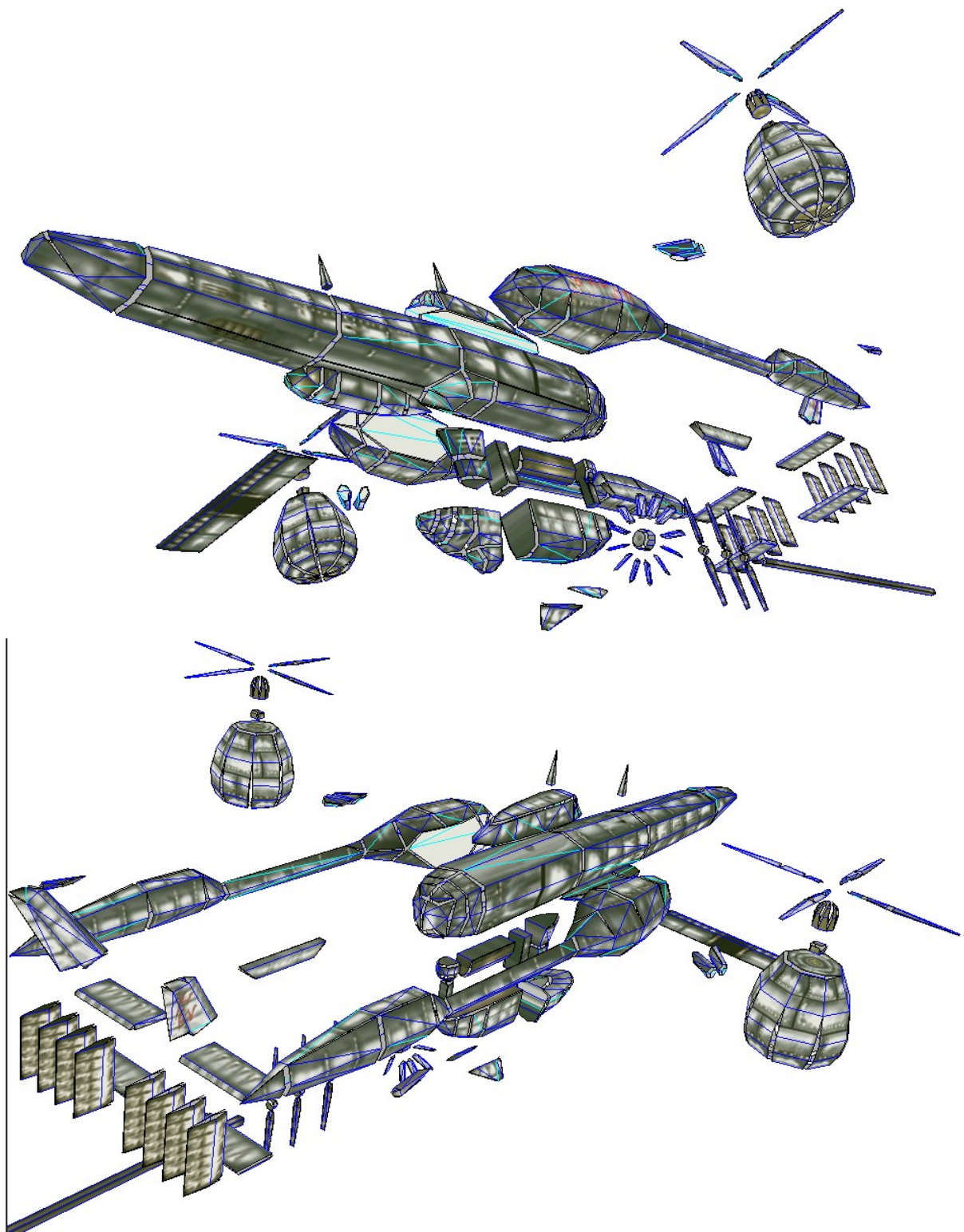
3. Put the parts together.

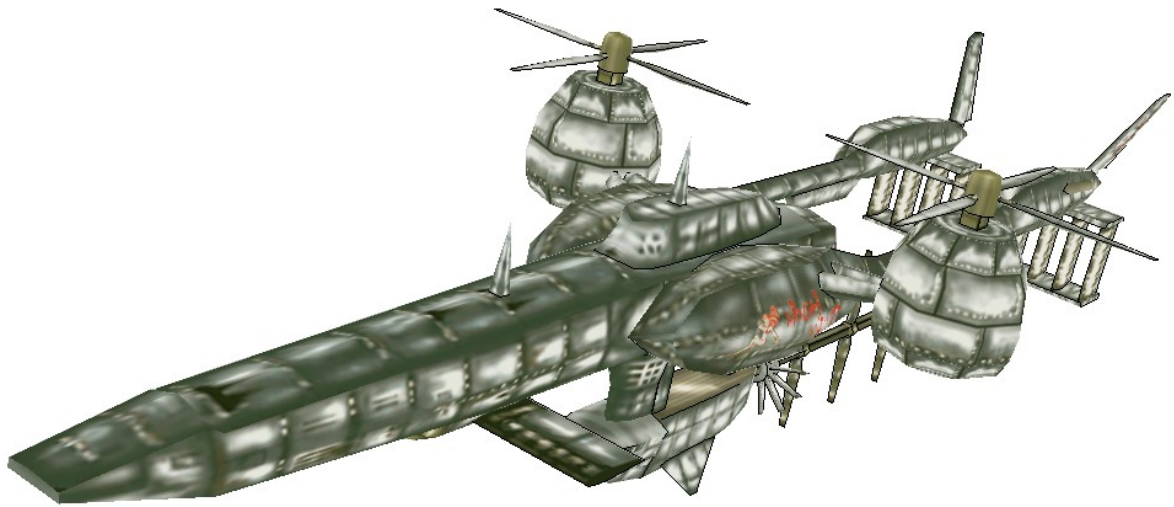
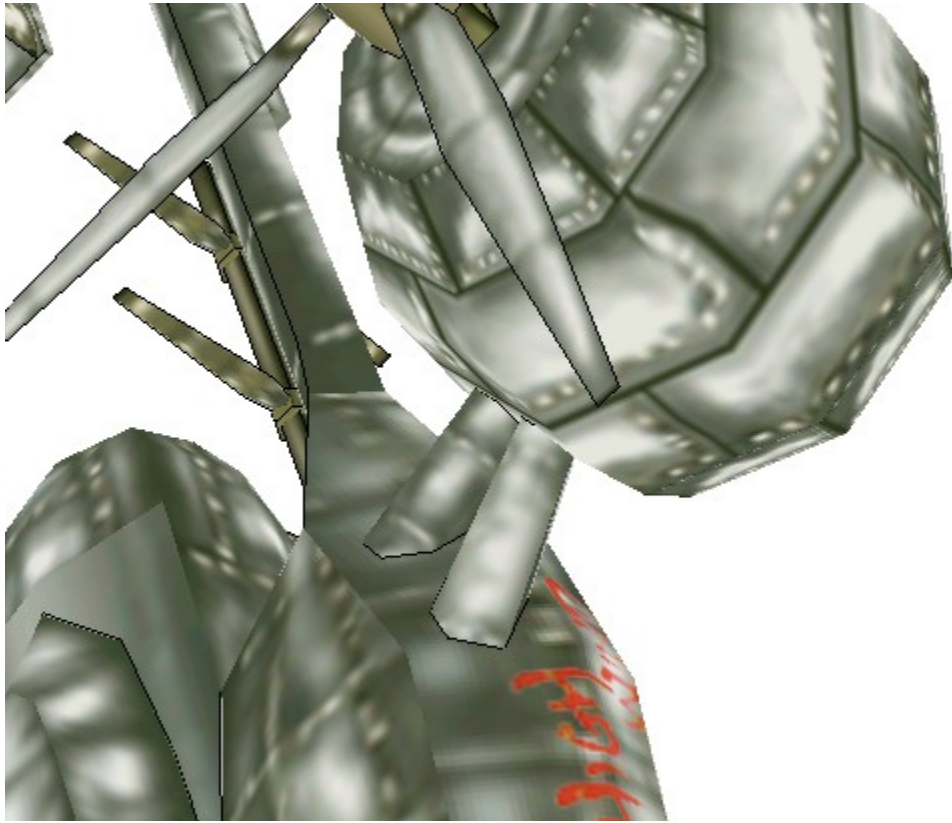


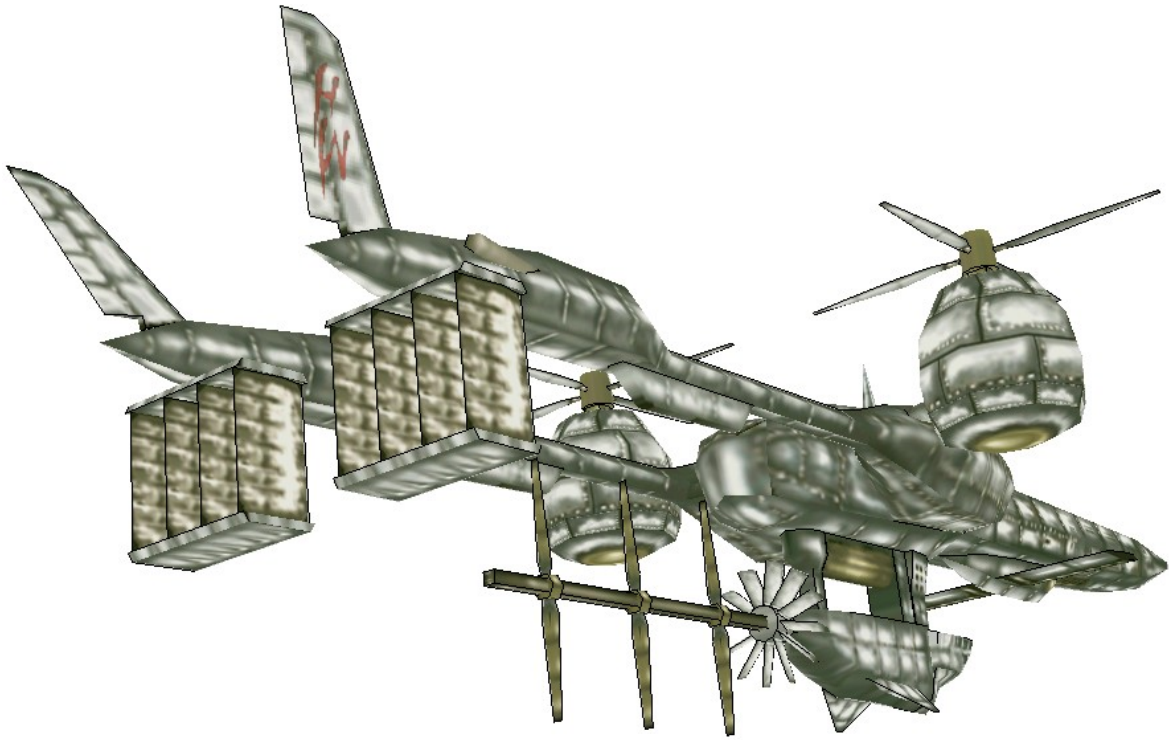
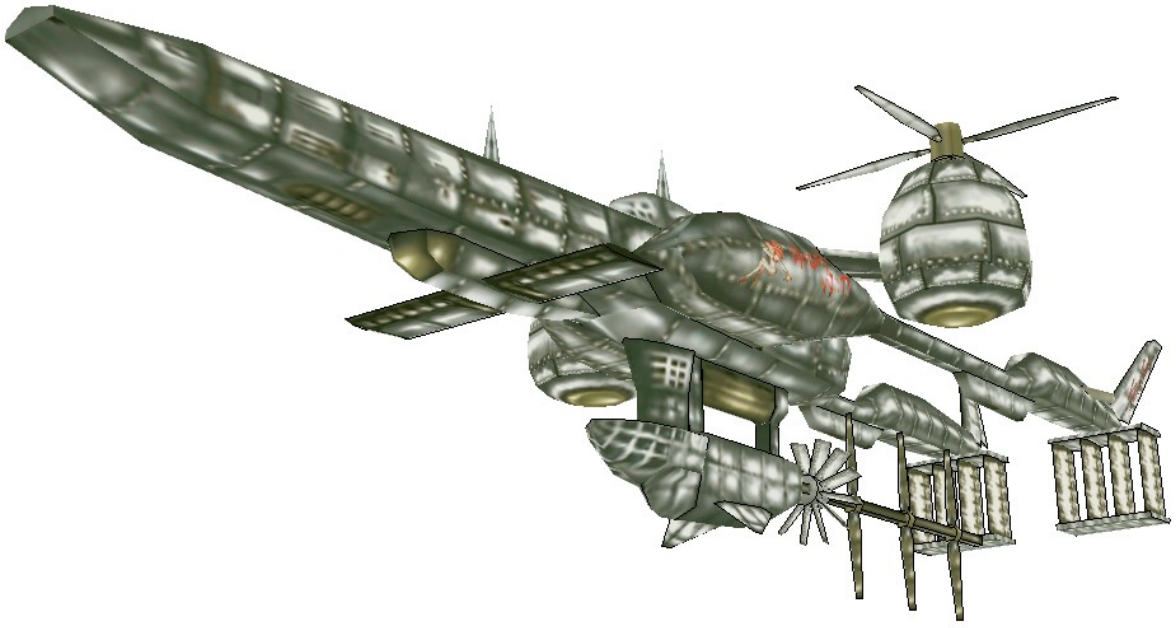
Cut square shaped holes into the rotorsockets and the car, so that the long staff will have some grip. Also, you need reinforce thin structures with wooden sticks or stuff like that. (Cardboard will do it too)

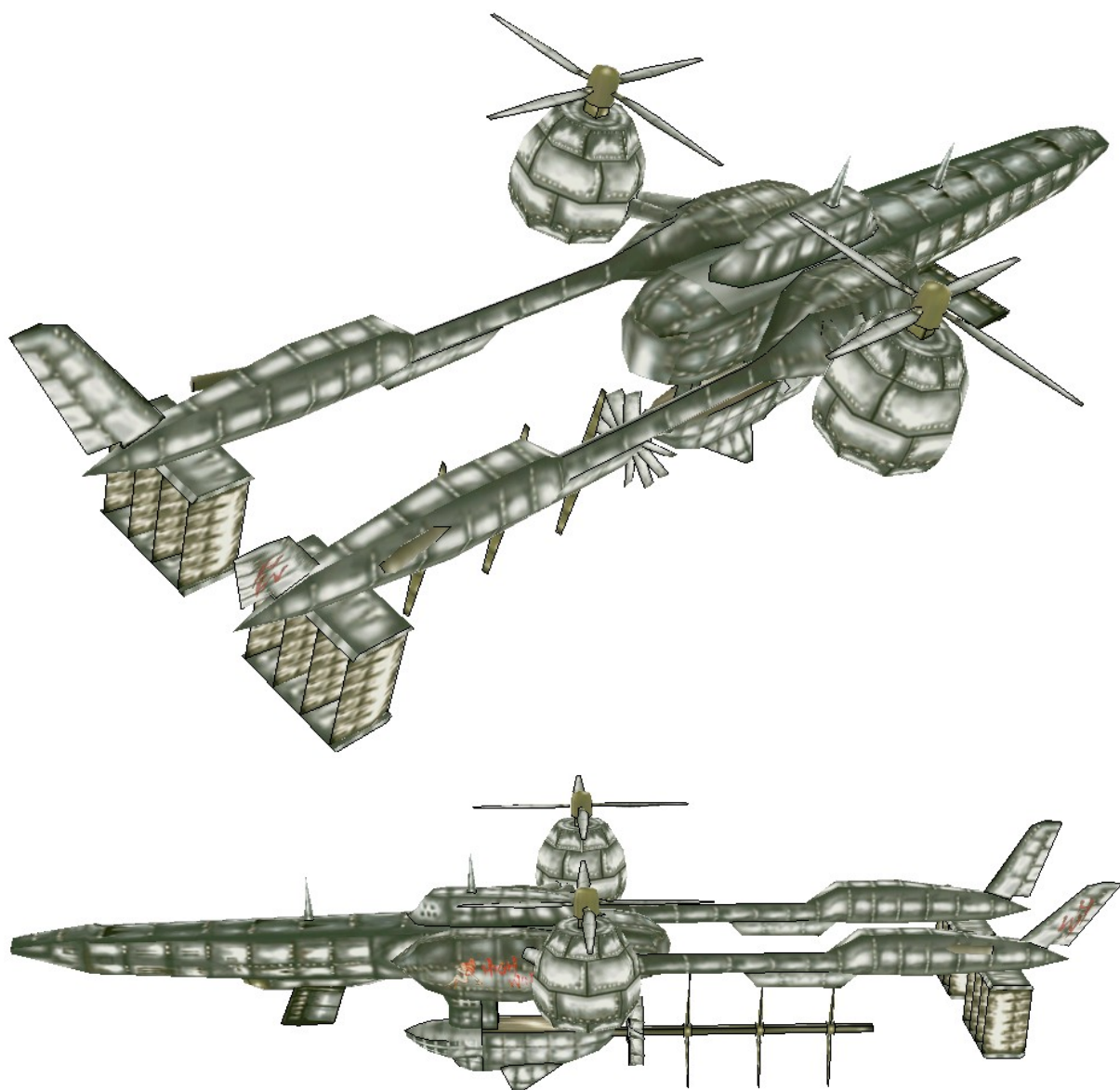


Here you need to cut holes too, else you won't be able to attach the front wing.









Congratulations! You've just build the Highwind. The End!